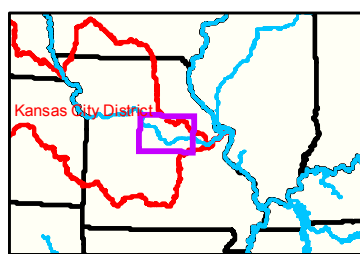


Notes

Jefferson City Gage = 6.55 at time of collection 13 November 2020

Gage_L



LEGEND

	< 8		< 8 ft		Green Passing		Green		AIS Green CAN
	8 - 9		8 - 9 ft		Red Passing		Red		AIS Red NUN
	9 - 9.5		9 - 10 ft		Green Crossing		Green NUN		Red NUN
	9.5 - 10		10 - 12 ft		Red Crossing		Junction		
	10 - 12		River Mile						
	12 - 14		Sailing Line						
	14 - 16		BSNP Structure						
	> 16		Levee						

Buoy

- AIS Green CAN
- AIS Red NUN
- Green CAN
- Red NUN

Scale: 0 312.5 625 937.5 1250 2,500 Feet

NOTES:
 Horizontal Coordinate System:
 World Geodetic System of 1984 (WGS84), projected to the
 Universal Transverse Mercator (UTM) Zone 15 North.
 Distance units in U.S. Survey Feet

Vertical Datum:
 Soundings are shown in feet and indicated depths
 are referenced to water surface at time of collection.

The information depicted on this map represents the results of a survey
 conducted on the date indicated and can only be considered
 to represent the general condition existing at that time.

The location of navigation aids are based on and provided by
 the U.S. Coast Guard.



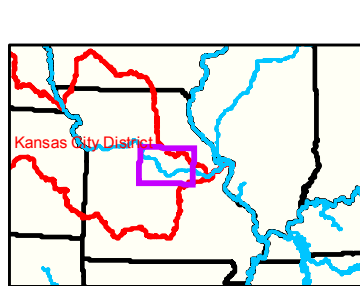
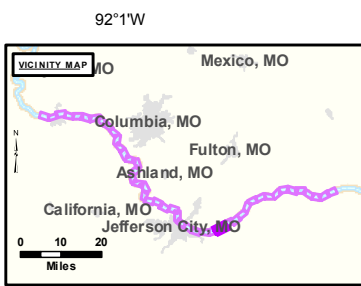
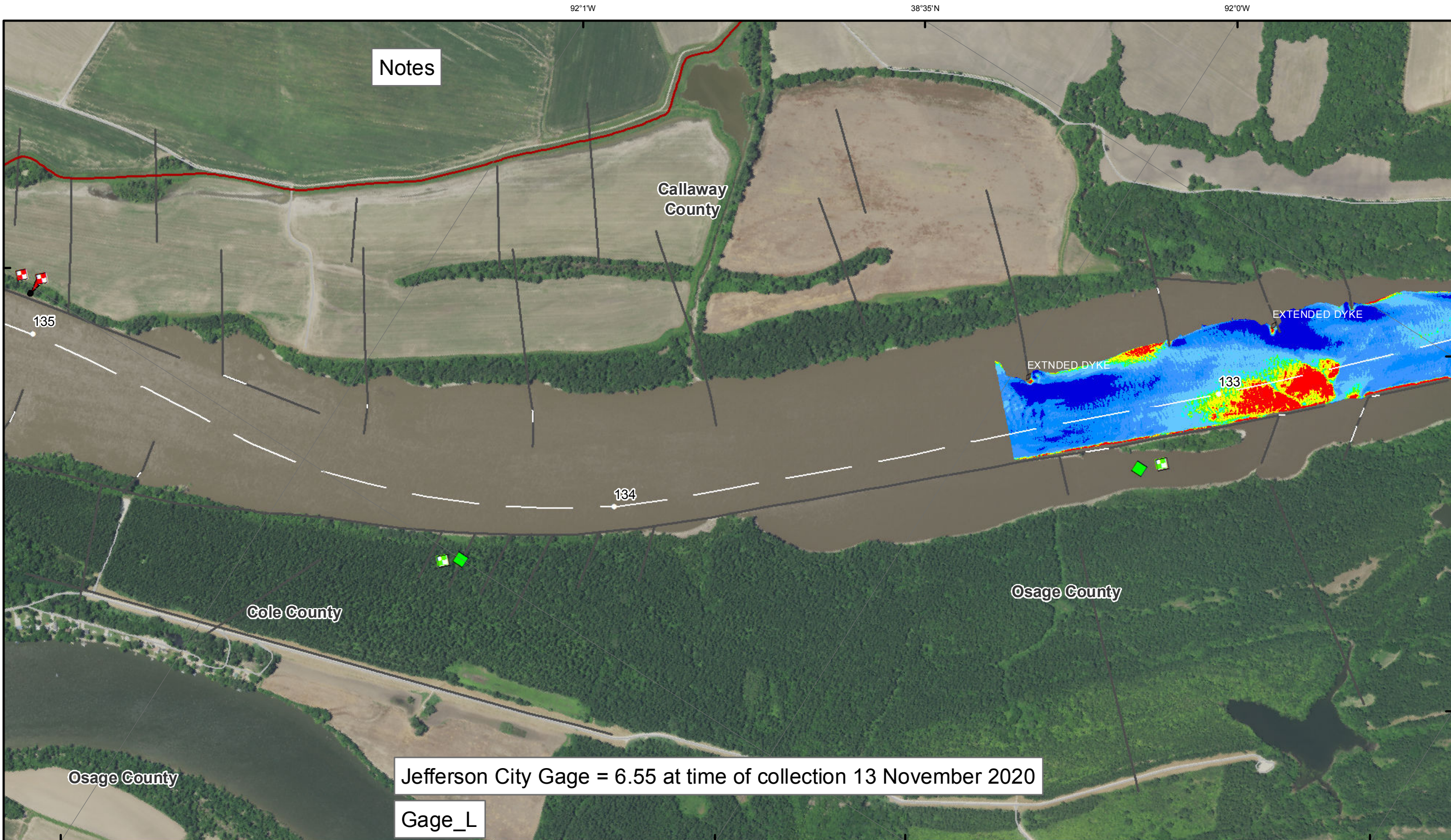
PRECEDENCE: The United States Government furnishes this information for the use of the public in the absence of any notice to the contrary. It is not to be construed as an endorsement or approval of the product or service shown herein, nor is it to be construed as a warranty or guarantee of the accuracy or completeness of the information furnished. The United States Government makes no warranty, representation, or assurance of any kind, expressed or implied, for the use of the information furnished for purposes other than those for which it was prepared. The user assumes all liability for any damage or injury resulting from the use of the information furnished. The user also assumes all liability for any damage or injury resulting from the use of the information furnished for purposes other than those for which it was prepared. The user also assumes all liability for any damage or injury resulting from the use of the information furnished for purposes other than those for which it was prepared.

KANSAS CITY DISTRICT MISSOURI RIVER AREA OFFICE	
Submitted By:	MIRA/O
Reviewed By:	MIRA/O
Checked By:	MIRA/O
Approved:	

Survey Information

MO_02_LMR
 MO_02_LMRX_20201113_CS_132_5_133_3_SORT
 13 November 2020

Sheet Number
 15 of 46



LEGEND

	< 8		< 8 ft		Green Passing		Green		AIS Green CAN
	8 - 9		8 - 9 ft		Red Passing		Red		AIS Red NUN
	9 - 9.5		9 - 10 ft		Green Crossing		Green CAN		Red NUN
	9.5 - 10		10 - 12 ft		Red Crossing		Junction		
	10 - 12		River Mile						
	12 - 14		Sailing Line						
	14 - 16		BSNP Structure						
	> 16		Levee						

Buoy

- AIS Green CAN
- AIS Red NUN
- Green CAN
- Red NUN

Scale: 0 312.5 625 937.5 1250 2500 Feet



NOTES:
 Horizontal Coordinate System:
 World Geodetic System of 1984 (WGS84), projected to the
 Universal Transverse Mercator (UTM) Zone 15 North.
 Distance units in U.S. Survey Feet

Vertical Datum:
 Soundings are shown in feet and indicated depths
 are referenced to water surface at time of collection.

The information depicted on this map represents the results of a survey
 conducted on the date indicated and can only be considered
 to represent the general condition existing at that time.

The location of navigation aids are based on and provided by
 the U.S. Coast Guard.

Notes

Jefferson City Gage = 6.55 at time of collection 13 November 2020

Gage_L



DISCLAIMER: The United States Government is authorized to reproduce and distribute reprints for government purposes not withstanding any copyright notation that may appear hereon. The United States Government is authorized to reproduce and distribute reprints for government purposes not withstanding any copyright notation that may appear hereon. The United States Government is authorized to reproduce and distribute reprints for government purposes not withstanding any copyright notation that may appear hereon. The United States Government is authorized to reproduce and distribute reprints for government purposes not withstanding any copyright notation that may appear hereon.

KANSAS CITY DISTRICT MISSOURI RIVER AREA OFFICE	
Submitted By:	MIRAO
Reviewed By:	MIRAO
Checked By:	MIRAO

Survey Information
 MO_02_LMR
 MO_02_LMRX_20201113_CS_132_5_133_3_SORT
 13 November 2020

Sheet Number
 16 of 46